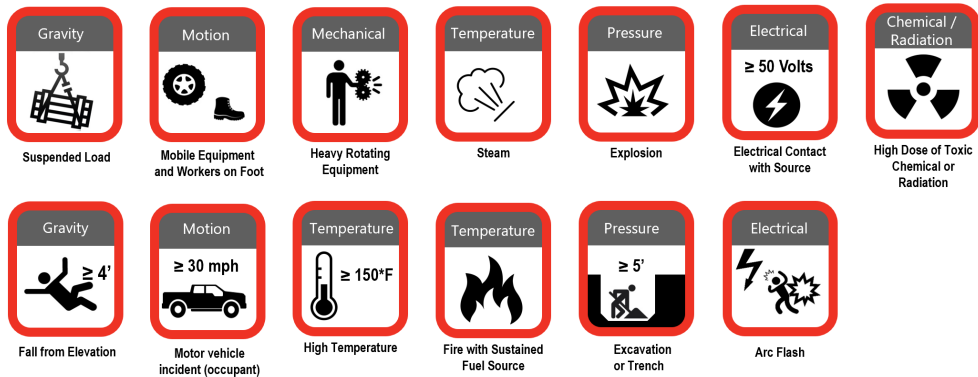
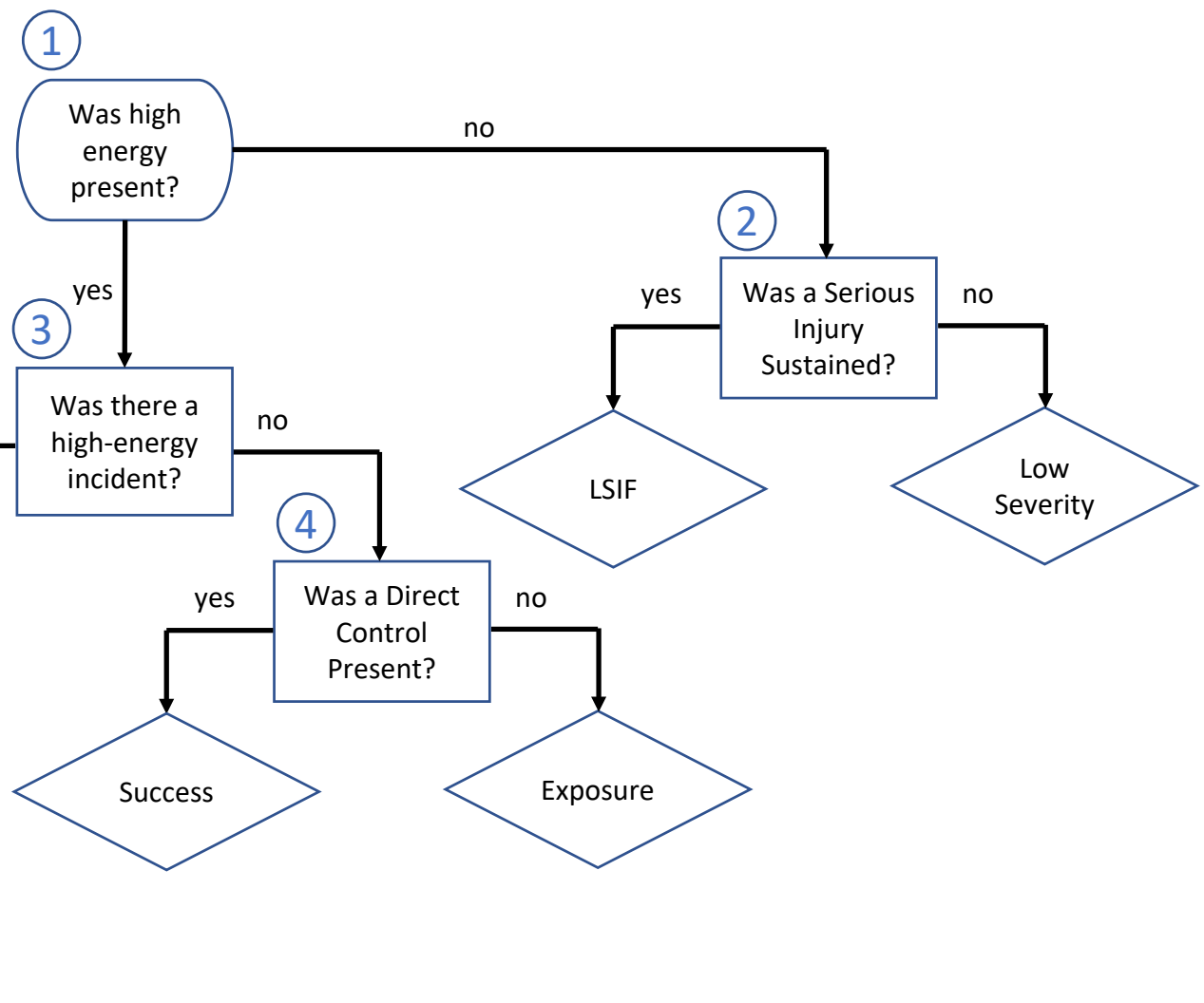


# EEI Safety Classification & Learning Model

**1 Was High-Energy Present?** Refer to icons below or energy assessment charts if there is no applicable icon



**2 Was a Serious Injury Sustained?** Refer to EEI SIF definitions for a complete categorization and description of SIF events.



**3 Was there a High-Energy Incident?** An instance where the high-energy source was released and where the worker came in contact with or proximity to the high-energy source.

- Released: An instance where energy source changes state while exposed to the environment
- Contact: An instance when high energy is transmitted to the human body
- Proximity: An instance with unrestricted egress where the boundary of the high energy exposure is within 6 feet of a worker or any distance to a high energy source when there is restricted egress from the energy source.

**4 Was a Direct Control Present?** For each high energy source, a direct control is present if:

1. The control is specifically targeted to the high-energy source
2. The control effectively mitigates exposure to the high energy source when installed, verified, and used properly (i.e., a SIF incident cannot reasonably occur)\*
3. The control is effective even if there is unintentional human error during the work period (unrelated to the installation of the control)